

MARY KAY
**Glamour
Guide**

discover what you **LOVE**™

Foundation Tools

Liquid Foundation Brush

Build desired coverage even around the curves of your face.

Synthetic bristles hold the perfect amount of liquid foundation.

Angled flat top allows for foundation application directly to the brush.

Brush shape blends foundation in hard-to-reach areas of the face.



Powder Foundation Brush

Gives you control over the application of your favorite powder formulas.

Rounded top applies foundation evenly.

Helps create a natural finish.



Foundation Tools cont...

Blending Sponge

This versatile, reusable tool can help you achieve a flawless finish.

Easy-to-grip ergonomic design and custom dual edges.

Flat end is perfect for blending larger areas. Pointed tip is designed for hard-to-reach areas such as under the eyes.



Unique open-cell structure is designed to absorb water and less product.

Foundation Primer

This lightweight gel glides on easily to fill in imperfections and dries quickly to a matte finish to create the perfect canvas for a flawless foundation application that enhances foundation benefits and extends wear.

Oil-free formula with SPF 15* is mineral-enriched to absorb oil and diffuse light to help reduce the appearance of fine lines, wrinkles, and pores.



Our Essential Brush Collection



Our Brush Collection includes five high-quality, precisely shaped brushes which are ideal for creating a range of looks, packed in a stylish, portable clutch.

New brush shapes help anyone create makeup looks with confidence. Each brush excels at blendability, application, and pickup.

Synthetic bristles are compatible with liquid, cream, and powder.

**Ask me about purchasing
your set to use today!**

- ✓ All-Over Powder Brush
- ✓ Cheek Brush
- ✓ All-Over Eye Shadow Brush
- ✓ Eye Crease Brush
- ✓ Eye Smudger Brush
- ✓ Brush Clutch

Pick Your Eye Shape



Standard Eye

Eyes that are about one eye width apart.

Apply Shade 1 to the brow bone, Shade 2 on the eyelid, and Shade 3 at the crease. Remember to blend shades seamlessly while maintaining the definition created by the three shades.



Wide-Set Eyes

Eyes that are more than one eye width apart.

To help eyes appear closer together, apply Shade 1 to the outer brow bone and Shade 2 on the eyelid. Apply Shade 3 to inner corner of the eye instead of the outer corner and extend up to the eye brow. Then apply the same shade to the entire lower lashline.



Close-Set Eyes

Eyes that are less than one eye width apart.

To help the eyes appear further apart, apply Shade 1 to the brow bone and Shade 2 to the eyelid. Apply Shade 3 to the outer corner of the eye in a softly blended triangle shape. Blend the same shade along the outer third of the lower lashline.



Hooded Eye

Eyes with an eyelid that is not readily seen.

To add dimension to the eyes and give the illusion of a deeper eye crease, apply Shade 1 to the eyelid. Apply Shade 3 along the top of the entire length of the eye crease and blend upward almost to the brow. Then apply Shade 2 along the brow bone instead of the eyelid.



Deep-Set Eye

Eyes that are set deep with a prominent brow bone

Apply Shade 3 to the entire eyelid and on the outer third of the lower lashline. Trace a line from the inner corner of the eye crease to the brow bone with Shade 2. Apply Shade 1 just above Shade 2 and to the inner corner of the eye.

Eye Primer

Our AMAZING eye primer extends wear of eye color.

Plus, it prevents eye color from creasing and smudging!



Step 1: Highlight Color

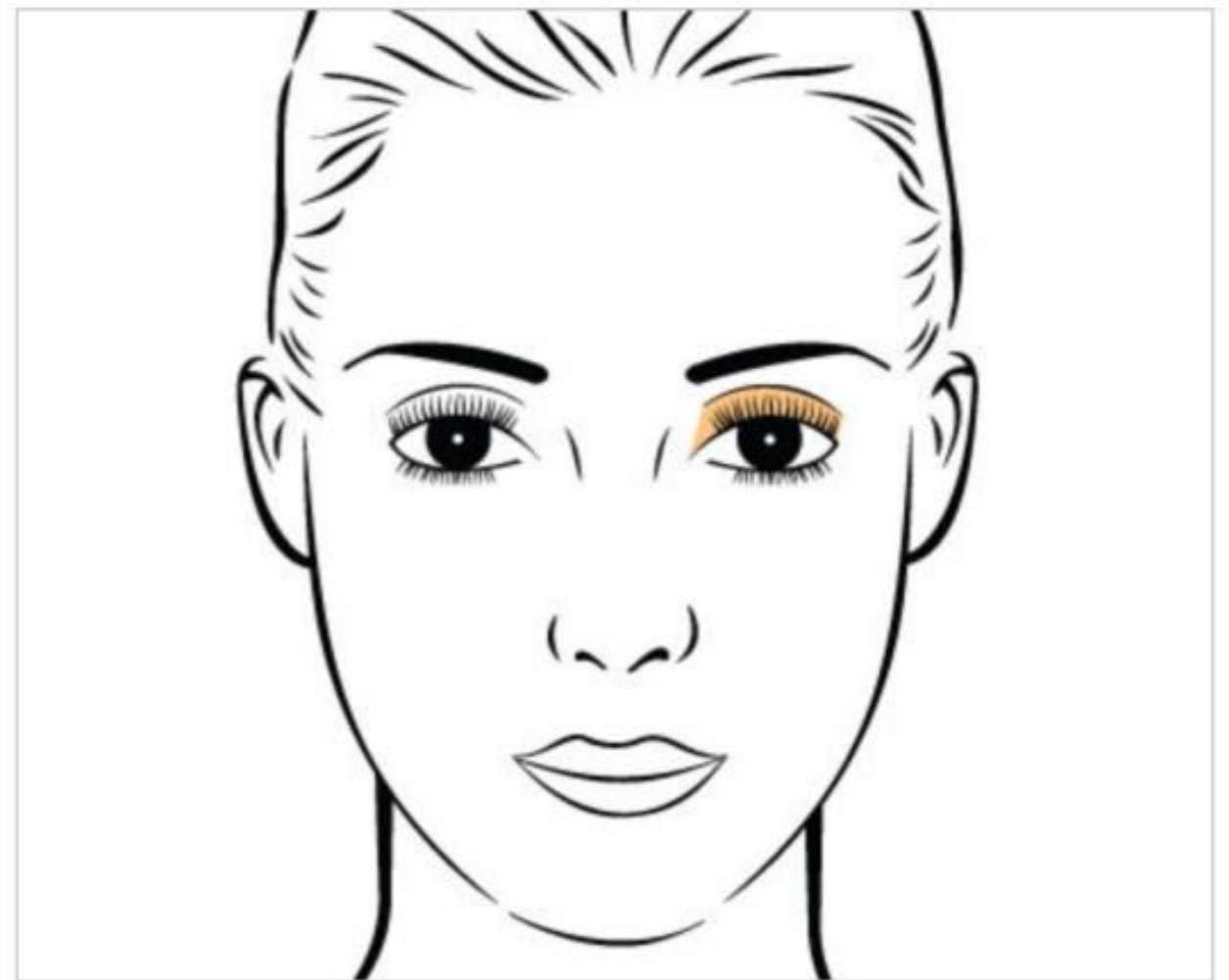
All-Over Eye Shadow Brush

A medium-sized tapered shape helps this brush fit naturally into the eyelid's delicate contours.

Flexible bristles make quick work of blending to help diffuse edges.



How To Use



Sweep brush across your lightest shade of eye shadow, tapping off excess before application. Sweep color across the eyelid. Also use to highlight at the brow bone.

Step 2: Mid-Tone Color

EYE CREASE BRUSH

Flexible, with an angled tip, this brush is designed to fit within the contours and crease of the eyelid to add professional dimension to your eye look.



How To Use



Sweep across mid-tone eyeshadow, tapping off excess. Starting from the outer corner of the eye, sweep inward along crease or pat color directly into crease before blending.

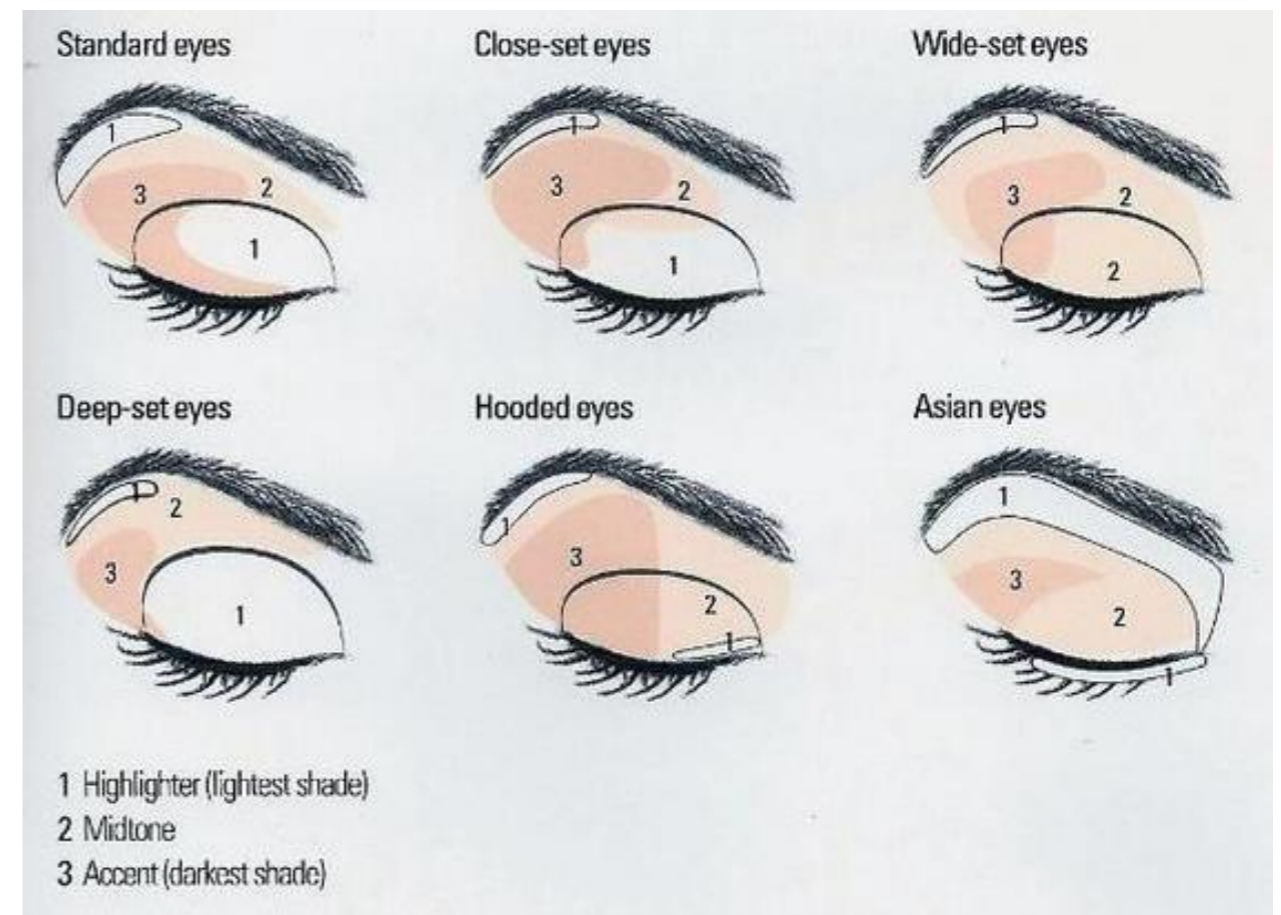
Step 3 : Accent Color

EYE SMUDGER BRUSH

A dense, tapered tip is designed to help you create detailed accents. It allows you to smudge at the lash line to achieve a covetable smoky look and helps add detail in hard-to-reach places.

Bonus: With eye line, use short strokes to softly smudge eyeliner and achieve a smoky effect.

How To Use



With deepest color, use short sweeping motions to apply from outer edge of upper lash line, inward. Repeat with lower lash line. Brush also can be used to highlight at the inner corner of the eye with your lightest shade.



Step 4: Blend

All-Over Eye Shadow Brush

Using your all-over eye color brush, lightly blend the edges where the shades meet.

Remember: DO NOT make large strokes and “mix” all the colors together.

How To Use



Step 5: Cleaning Up

Cream Color Brush

The Mary Kay® Cream Color Brush blends cream formulas onto the areas of your face that are trickiest to reach.

Applies in a natural, fingertip-like finish. Works with Mary Kay® Cream Eye Color, Mary Kay® Undereye Corrector and Mary Kay® Perfecting Concealer.

Flat side and precise tip can be used for dual purposes.



How To Use



Using CC Cream, liquid foundation, concealer, or the under eye corrector, use the cream color brush to apply under the eye area and from the corner of the eye to the edge of the brow to “clean” the eye look.

Step 6: Beautiful Brows

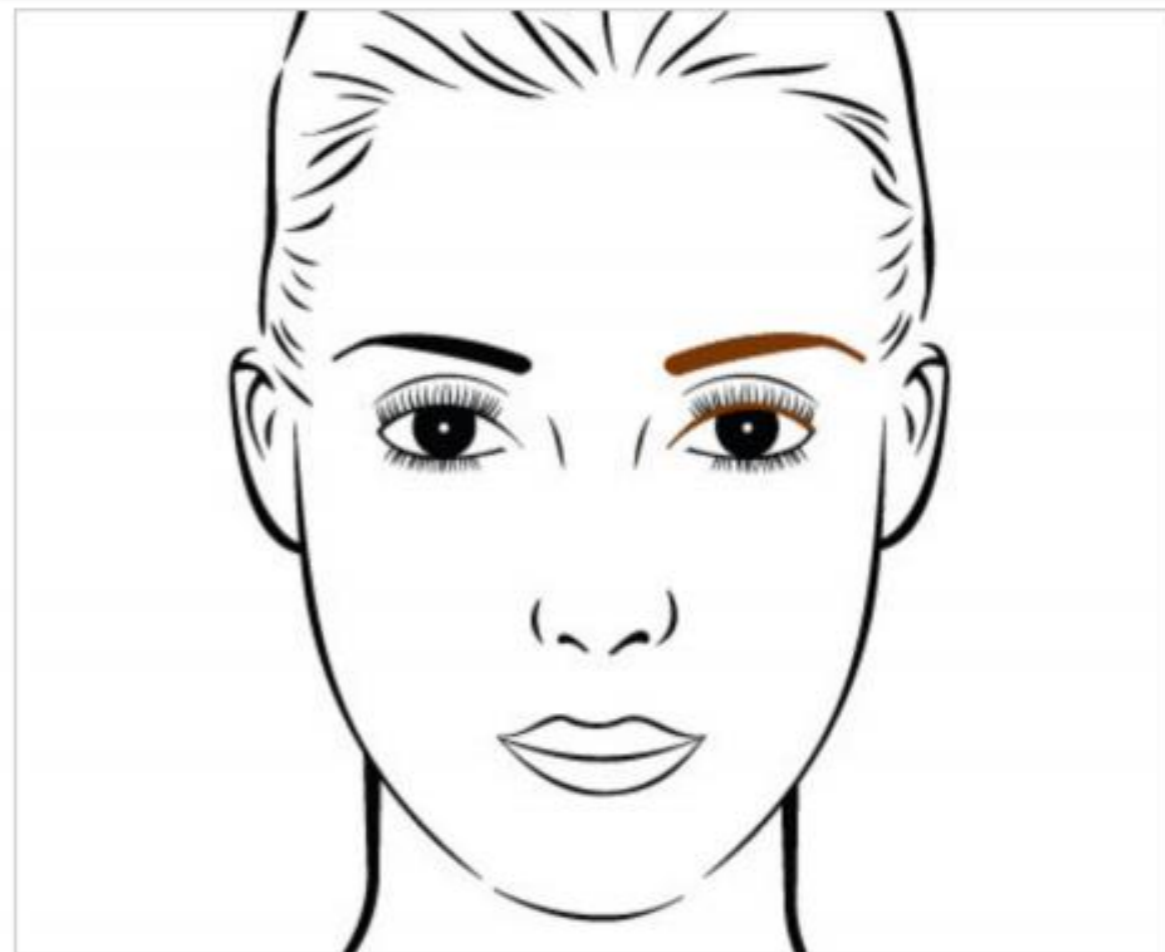
Eyebrow/Eyeliner Brush

Tame brows, fill in sparse areas and precisely apply eyeliner with the Mary Kay® Eyebrow/Eyeliner Brush.

Wired Spoolie on one end and firm, angled brush on the other. Bristles gently grip product until you place it where you want it. The Eyeliner Brush is compatible with cream and powder formulas.



How To Use



Using the angled brush, dip it into matte eyeshadow that blends with your brow color. Holding brush tip horizontal, use short strokes to fill in brow. Then soften by combing in short strokes with Spoolie.

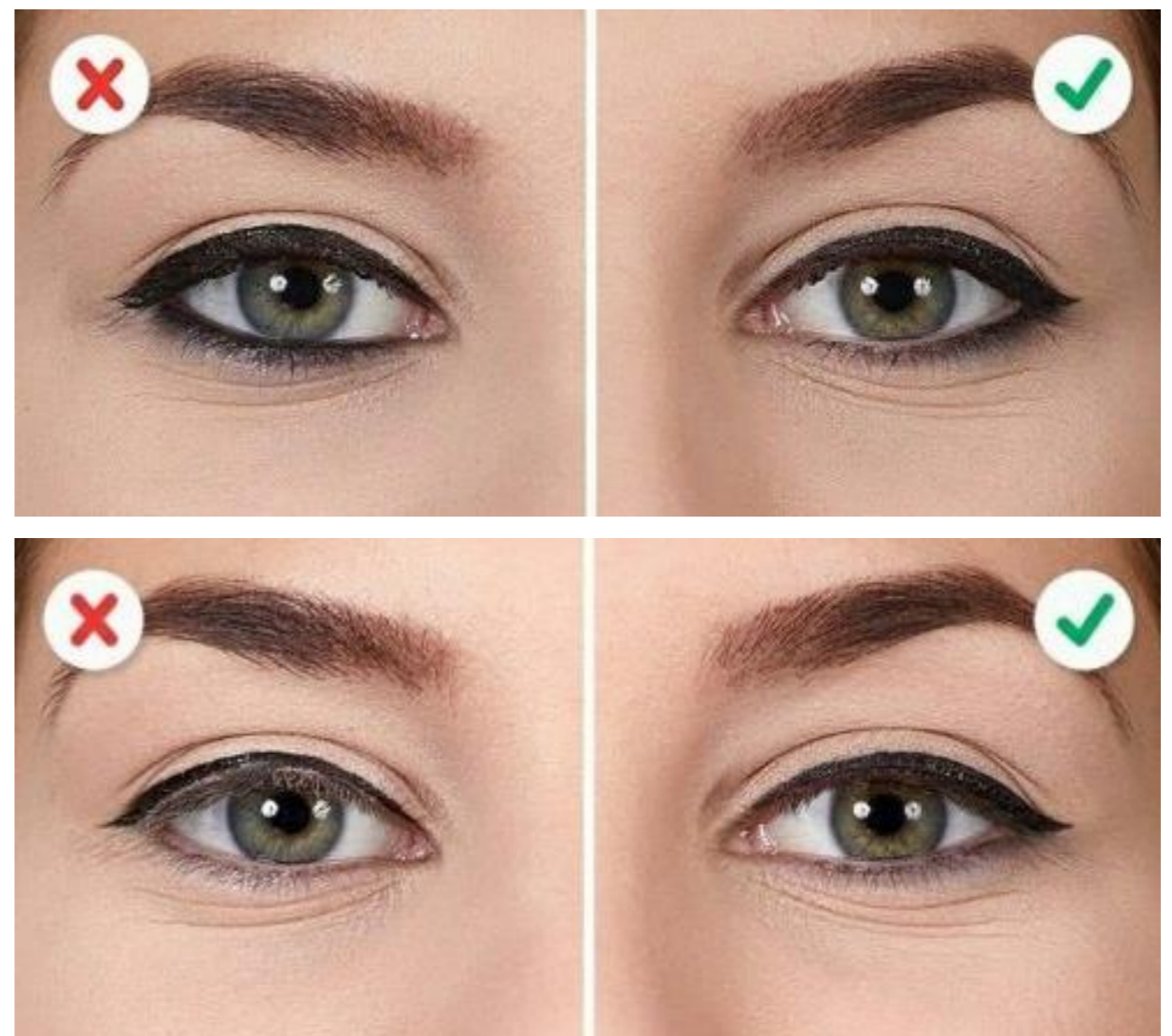
Step 7: Eyeliner

You can do the top lid and not the bottom lid, but never do just the bottom lid. Doing just the bottom lid makes you look tired and give the appearance of dark circles.

Also remember to apply your liner in the lash line, not above the lash line or in the water line.



How To Use



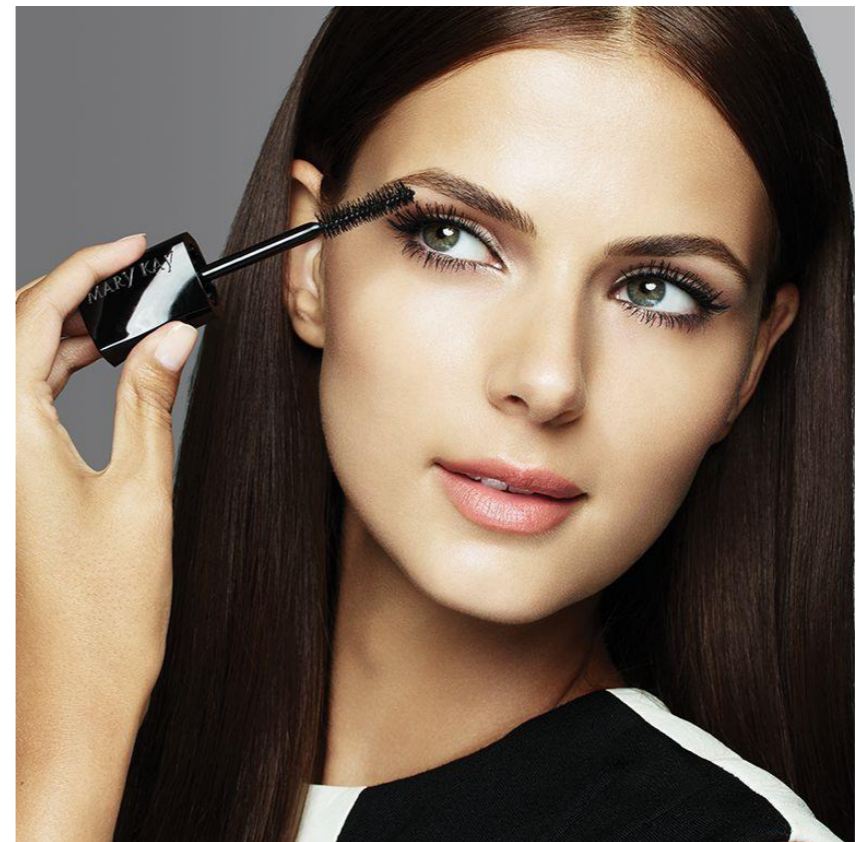
Apply liner in short strokes or a straight stroke. Start from the outside and work in. Try and not pull on your eyelid.

Step 8: Mascara

If you have deep set eyes, apply your mascara to the bottom lashes first. This will avoid you looking up with wet upper lashes causing your upper lashes to hit your eyelid.



How To Use



When applying mascara, make sure to apply multiple coats to achieve your desired look.

Remember to “wiggle and then pull” when using the wand. Use a clean Spoolie to get out any clumps!

Step 9: Cheek Color

CHEEK BRUSH

This multitasker features a 3-in-1 shape designed to help you enhance, sculpt, and highlight cheekbones without leaving harsh lines behind.

Bonus:

Use for Bronzer & Highlighter!



How To Use



Apply blush to the apples of your cheeks using the angled side of the brush.

Use the long, tapered edge for contoured look and shorter edge when applying highlighter.

Step 10: Translucent Powder

ALL-OVER POWDER BRUSH

Plush, full, domed bristles are designed to help pick up and evenly distribute just the right amount of face powder or bronzing powder.

Bonus: This brush also can be used to apply bronzer to the face and to larger areas, such as the décolleté.



How To Use



Sweep brush in translucent powder, tap to remove excess product, then sweep gently in circular motions in desired areas. Use for setting foundation, blending, or touch-ups.

Step 11: Lips

The easiest way to apply lipstick is to start from the center of your lips and brush outwards. Apply a second coat for a longer-lasting look. Blot your lipstick by closing your lips around your index finger and pulling your finger out.

Tip: For an even more polished lip, use our Timewise Lip Primer, Lip Liner and/or NouriShine Lipgloss!

How To Use



Step 12: Finishing Spray

WHEN
MAKEUP
MELTDOWN
IS NOT
AN OPTION



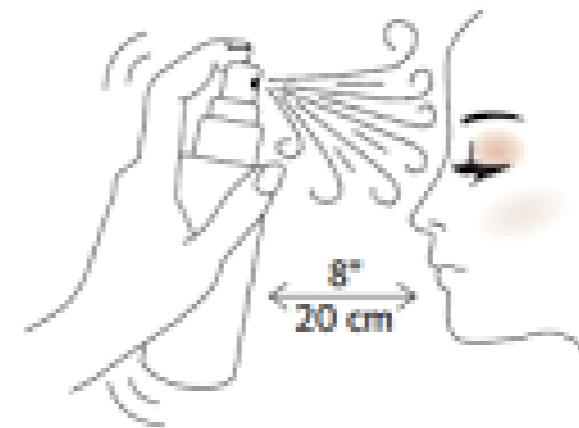
How To Use



APPLY
Apply your makeup.



SHAKE WELL



SPRAY
Spray 2-4 times in an "X" formation

**Don't forget to
keep your
brushes clean!**



MARY KAY[®]

HOW TO:

CLEAN YOUR MAKEUP BRUSHES

➔ HOW OFTEN? ONCE A MONTH

➔ YOU'LL NEED:

- MARY KAY[®] BRUSH CLEANER
- STRONG PAPER TOWEL

➔ DIRECTIONS:

1. SOAK BRISTLES WITH SPRAY
2. SWIPE BACK AND FORTH ON PAPER TOWEL UNTIL CLEAR
3. LAY BRUSHES DOWN, OR HANG UNTIL DRY

