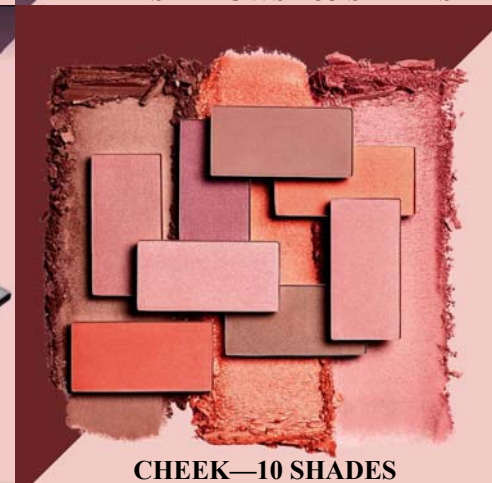


NEW! MARY KAY
**CHROMAFUSION COLOR
PRODUCTS**

EYE SHADOW, CHEEK, COUNTOUR
HIGHLIGHTER & PRO PALETTE



MARY KAY



NEUTRAL MATTES

- Step 1: Use **Sand Castle** as the base shade on the entire eyelid.
- Step 2: Define lower lashline with **Cinnabar**.
- Step 3: Apply **Espresso** on the outer corner of the eye in a "V" shape.
- Step 4: Add MK **Deep Brown** eye liner, and finish with mascara.
- Step 5: Sweep **Hot Coral** blush onto cheeks.
- Step 6: Apply gel semi-matte lipstick in **Crushed Berry**.

To take this look from day to night, line top and bottom lashlines with **Onyx**.

STANDARD/DE APPLICATION

MKB / MARY KAY® / ©2018 MKR/KYINC. ALL RIGHTS RESERVED. WN783000 11/18 PRINTED IN U.S.A.

The Company grants all Mary Kay Independent Beauty Consultants a limited license to duplicate this page in connection with their Mary Kay business in print form only. This page should not be altered from its original form nor incorporated into other materials.

MARY KAY



COOL METALS

- Step 1: Tap **Smoky Quartz** into the middle of eyelid
- Step 2: Apply **Stormy** in the outer corner of the eye for definition.
- Step 3: Highlight the inner corner of the eye with **Crystalline**.
- Step 4: Blend shades together to smooth out any hard lines.
- Step 5: Add MK **Black** eye liner to top lashline and finish with mascara.
- Step 6: Sweep **Shy Blush** blush onto cheeks.
- Step 7: Apply Gel Semi-Shine lipstick in **Red Smolder**.

For a less shimmery version, apply **Shadow** in place of **Stormy**.

STANDARD/DE APPLICATION

MKB / MARY KAY® / ©2018 MKR/KYINC. ALL RIGHTS RESERVED. WN783000 11/18 PRINTED IN U.S.A.

The Company grants all Mary Kay Independent Beauty Consultants a limited license to duplicate this page in connection with their Mary Kay business in print form only. This page should not be altered from its original form nor incorporated into other materials.

MARY KAY



PURPLES & PLUMS

- Step 1: Use **Sunlit Rose** as the base shade from lashline to brow bone.
- Step 2: Add **Merlot** in the crease and in the outer "V" of the eye..
- Step 3: Apply **MK Deep Brown** eyeliner to top and bottom lashlines.
- Sept 4: Layer **Sweet Plum** on top of eyeliner, and finish with mascara.
- Step 5: Sweep **Desert Rose** blush onto cheeks.
- Step 6: Apply gel semi-matte lipstick in **Berry Couture**.

To lighten this look, apply
Soft Heather in place of Merlot.

STANDARD APPLICATION

MK® / MARY KAY® / ©2018 MARY KAY INC. ALL RIGHTS RESERVED. VN783009 11/18 PRINTED IN U.S.A.

The Company grants all Mary Kay Independent Beauty Consultants a limited license to duplicate this page in connection with their Mary Kay business in print form only. This page should not be altered from its original form nor incorporated into other materials.

MARY KAY



PINKS & MAUVES

- Step 1: Use **Rose Gold** as the base shade on the entire eyelid.
- Step 2: Apply **Dusty Rose** to the crease and lower lashline.
- Step 3: Highlight inner corner of eye and brow bone with **Blossom**.
- Sept 4: Add **MK Deep Brown** eye liner, and finish with mascara.
- Step 5: Sweep **Rosy Nude** blush onto cheeks.
- Step 6: Apply gel semi-matte lipstick in **Rosewood**.

To take this look from day to night,
add **Golden Mauve** to the crease
and lower lashline.

STANDARD APPLICATION

MK® / MARY KAY® / ©2018 MARY KAY INC. ALL RIGHTS RESERVED. VN783009 11/18 PRINTED IN U.S.A.

The Company grants all Mary Kay Independent Beauty Consultants a limited license to duplicate this page in connection with their Mary Kay business in print form only. This page should not be altered from its original form nor incorporated into other materials.

MARY KAY



WARM METALS

- Step 1: Apply **Gold Status** as the base shade from lashline to brow bone.
- Step 2: Accent the center of the eyelid with **Shiny Penny**. Also bring down to lower lashline.
- Step 3: Use **Burnished Bronze** to create dimension by applying to the outer corner in a "V" shape.
- Step 4: Add MK **Deep Brown** eye liner to top lashline, and finish with mascara.
- Step 5: Sweep **Wineberry** blush onto cheeks.
- Step 6: Apply gel semi-matte lipstick in **Scarlet Red**.

For less shimmery version,
apply **Mahogany** in place of
Burnished Bronze.

STANDARD/DEVE APPLICATION

MK®/MARY KAY®/©2018MKR/KYINC. ALL RIGHTS RESERVED. YN783009 11/18 PRINTED IN U.S.A.

The Company grants all Mary Kay Independent Beauty Consultants a limited license to duplicate this page in connection with their Mary Kay business in print form only. This page should not be altered from its original form nor incorporated into other materials.

MARY KAY



STORMY BLUE

- Step 1: Use **Stormy** as the base shade on the eyelid.
- Step 2: Add **Evening Navy** in the crease starting from the outer corner of the eye.
- Step 3: Accent the eye using **Onyx** by blending into outer corner and along top lashline.
- Step 4: Add MK **Black** eye liner to the top lashline, and finish with mascara.
- Step 5: Sweep **Golden Copper** blush onto cheeks.
- Step 6: Apply gel semi-matte lipstick in **Apple Berry**.

To lighten this look, apply
Shadow in place of **Onyx**.

STANDARD/DEVE APPLICATION

MK®/MARY KAY®/©2018MKR/KYINC. ALL RIGHTS RESERVED. YN783009 11/18 PRINTED IN U.S.A.

The Company grants all Mary Kay Independent Beauty Consultants a limited license to duplicate this page in connection with their Mary Kay business in print form only. This page should not be altered from its original form nor incorporated into other materials.

MARY KAY



BERRIES & GOLD

- Step 1: Use **Sand Castle** as the base shade on the eyelid.
- Step 2: Apply **Candlelight** to the center of the eyelid.
- Step 3: Accent outer corner of eyelid with **Merlot**.
- Sept 4: Blend shades together to smooth out any hard lines.
- Step 5: Add MK **Deep Brown** eye liner to top and bottom lashlines, and finish with mascara.
- Step 6: Sweep **Rosy Nude** blush onto cheeks.
- Step 7: Apply gel semi-matte lipstick in **Crushed Berry**.

To take this look from day to night, line top and bottom lashlines with **Onyx**.

STANDARD/DEVE/APPLICATION

MK® / MARY KAY® / ©2018 MKR/KYINC. ALL RIGHTS RESERVED. WN783009 11/18 PRINTED IN U.S.A.

The Company grants all Mary Kay Independent Beauty Consultants a limited license to duplicate this page in connection with their Mary Kay business in print form only. This page should not be altered from its original form nor incorporated into other materials.

MARY KAY



GOLDEN MOSS

- Step 1: Use **Biscotti** as the base shade on the eyelid.
- Step 2: Apply **Gold Status** to the center of the eyelid.
- Step 3: Add **Moss** to the crease and in a "V" shape in the outer corner.
- Sept 4: Add MK **Deep Brown** eye liner to the top lashline and finish with mascara.
- Step 5: Sweep **Juicy Peach** blush onto cheeks.
- Step 6: Apply gel semi-matte lipstick in **Naturally Buff**.

To take this look from day to night, layer **Hot Fudge** on top of eyeliner.

STANDARD/DEVE/APPLICATION

MK® / MARY KAY® / ©2018 MKR/KYINC. ALL RIGHTS RESERVED. WN783009 11/18 PRINTED IN U.S.A.

The Company grants all Mary Kay Independent Beauty Consultants a limited license to duplicate this page in connection with their Mary Kay business in print form only. This page should not be altered from its original form nor incorporated into other materials.

MARY KAY



PINKS & NEUTRALS

- Step 1: Use **Cashmere Haze** as the base shade on the eyelid.
- Step 2: Apply **Golden Mauve** in the crease.
- Step 3: Highlight inner corner of eye with **Blossom**.
- Step 4: Add MK **Black** eye liner onto top lashline, and finish with mascara.
- Step 5: Sweep **Hint of Pink** blush onto cheeks.
- Step 6: Apply gel semi-matte lipstick in **Rosewood**.

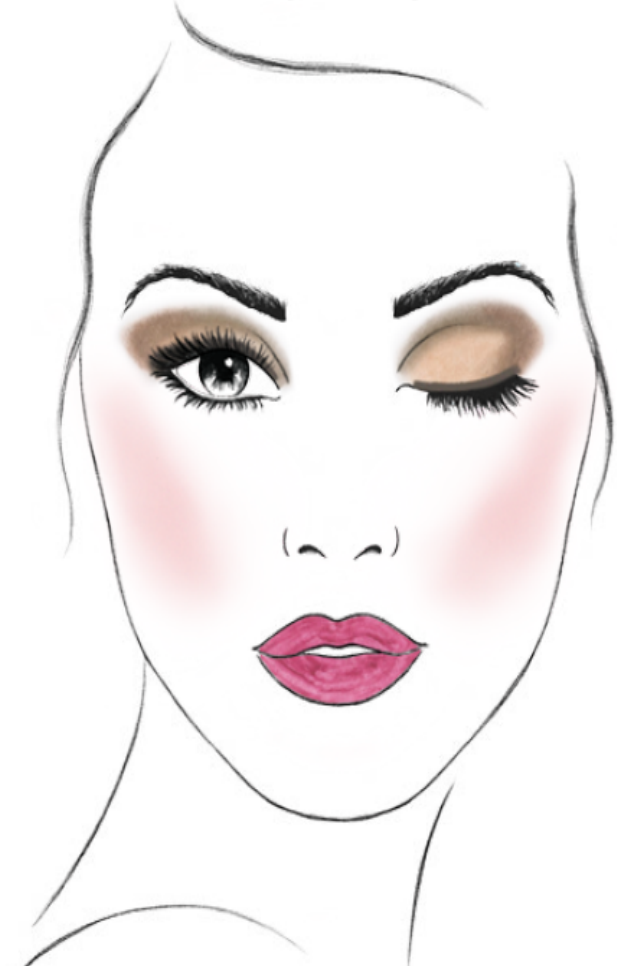
To add more definition,
smudge **Merlot** along top
and bottom lashlines.

STANDARD EYE APPLICATION

MK® / MARY KAY® / ©2018 MKR/KYINC. ALL RIGHTS RESERVED. WN783009 11/18 PRINTED IN U.S.A.

The Company grants all Mary Kay Independent Beauty Consultants a limited license to duplicate this page in connection with their Mary Kay business in print form only. This page should not be altered from its original form nor incorporated into other materials.

MARY KAY



PURPLES & NEUTRALS

- Step 1: Use **Candlelight** as the base shade on the eyelid.
- Step 2: Apply **Hot Fudge** in the crease.
- Step 3: Add **Frozen Iris** in a "V" shape in the outer corner on top of **Hot Fudge**.
- Step 4: Add MK **Deep Brown** eye liner to top lashline, and finish with mascara.
- Step 5: Sweep **Darling Pink** blush onto cheeks.
- Step 6: Apply gel semi-matte lipstick in **Apple Berry**.

For a less shimmery version,
apply **Biscotti** in place of
Candlelight.

STANDARD EYE APPLICATION

MK® / MARY KAY® / ©2018 MKR/KYINC. ALL RIGHTS RESERVED. WN783009 11/18 PRINTED IN U.S.A.

The Company grants all Mary Kay Independent Beauty Consultants a limited license to duplicate this page in connection with their Mary Kay business in print form only. This page should not be altered from its original form nor incorporated into other materials.